



THE
MERIDIAN
TOWERS

AT THE HEART OF IT ALL





THE DEVELOPER

Rockline board of advisors includes luminaries like Mr. S. L. Rawal founder of Rockline, our vision is to build India's most customer centric real estate company, admired not just for its scale & profitability, but also for its impact on the lives of its customers.

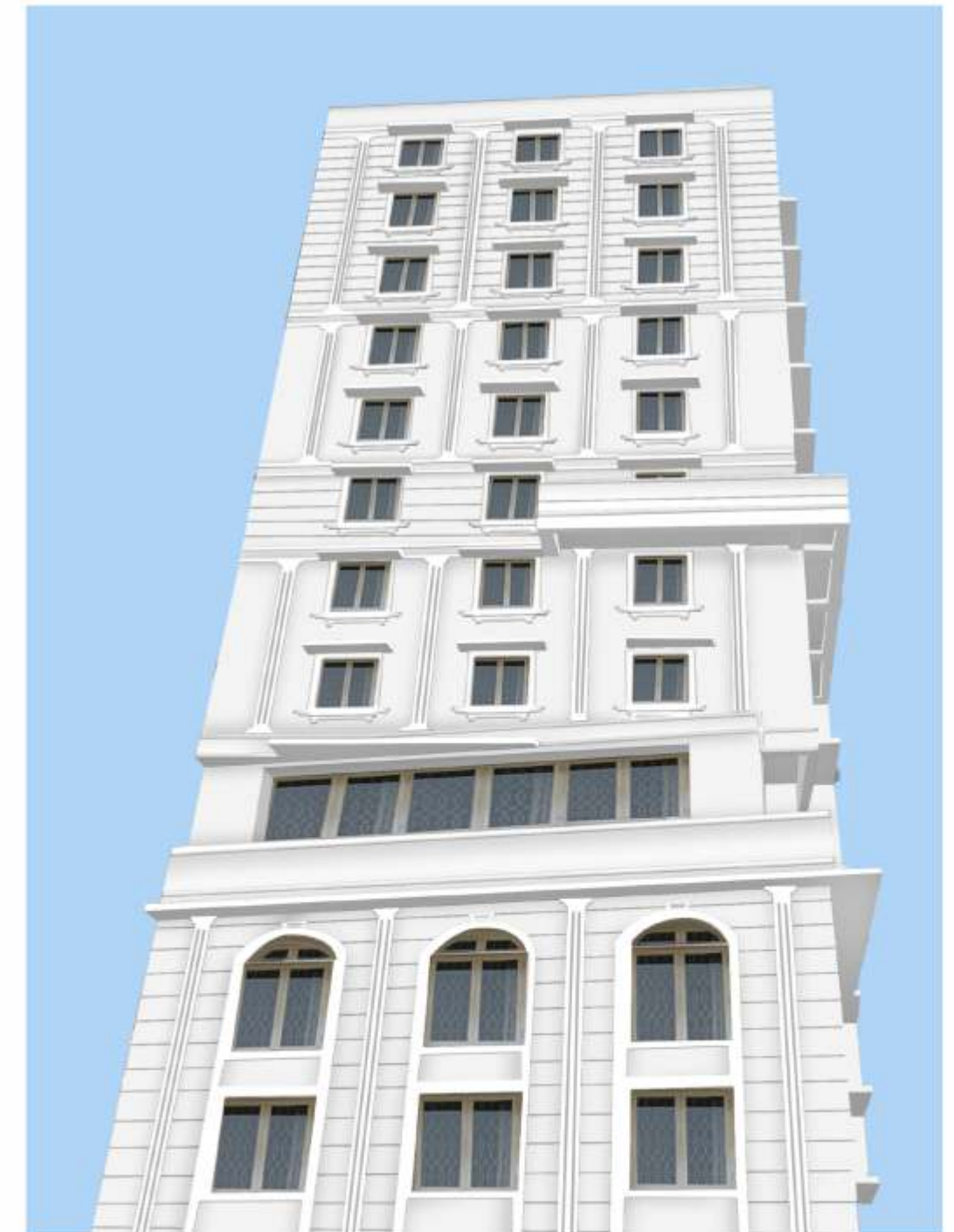
Rockline has etched its pillars of expert & experienced guidance for over 4 decades and we aim to carve a unique position in industry and thrive to build sustainable & value driven homes. Founded with a clear vision of giving innovative life spaces with high quality & thoughtfully designed structures.



Nadhal Lands LLP - Versova, Andheri - West.
Base + G + 2 • 12,000 Sq.Ft.



Eden Square - Juhu, Vileparle - West.
Base + G + 7 • 25,000 Sq.Ft.



**The Tiara - Gulmohar
Vileparle - West.**
Two Base + G + 11
45,000 Sq.Ft.

AT THE HEART OF FACILITIES



CLUBHOUSE



FITNESS CENTER





GRAND ENTRANCE LOBBY



GAZEBO



ELEVATE TO THE REALM OF RETREAT

Recognizing the value of hard-earned leisure in the lives of today's ambitious homeowners, we provide the best facilities in our clubhouse. From a jogging track, yoga room, outdoor / indoor play areas to our gym, gazebo, and senior citizen seating area, we offer just the right provisions to keep you in the heart of luxury. Our clubhouse is also the nucleus of the The Meridian Towers community, helping forge long-term relationships among residents.

BALCONY



AT THE HEART OF CONVENIENCE




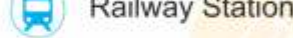



Rockline comes with an assurance of being able to cater to every essential need of a family. With all fundamental necessities at arm's length, The Meridian Towers makes for a perfect home, for today and tomorrow.

The Location of The Meridian Towers is uniquely advantageous. Conveniently close to both the international airport and eastern express highway, it is at the heart of growth and commerce.

You will enjoy easy access to both prime business districts and malls, and major locations in both Thane and BKC. Needless to say as far as investments go, it doesn't get much better than this. Ghatkopar is, after all, Mumbai's fastest growing hubs.

The Meridian Towers inculcates a self-sufficient development that benefits from proximity to top-notch educational institutions, medical facilities, banks, petrol pumps, temples, mosque, malls, bus depot, etc. while enjoying vital connectivity and easy access to South Mumbai, Thane & Navi Mumbai via major highways and expressways.



-  Road
-  Railway
-  Metro
-  Railway Station
-  Mono Rail
-  Airport
-  Bus Depot





COMPLETE CONTEMPORARY LIVING

Home is a manifestation of one's self. A haven that reflects the homeowner's lifestyle.

The Meridian Towers, a benchmark in contemporary architecture, is designed to embody the personality, lifestyle and ideals of homeowners, perfectly echoing the tastes of those it shelters. Every aspect of The Meridian Towers is designed keeping in mind the needs of the modern professional. This Vaastu-compliant property offers everything from cutting-edge amenities to intelligent space design, and is located in one of the most sought-after neighbourhoods in Mumbai.

The Meridian Towers employs a masterful blend of urban and traditional aesthetics, giving you the best of innovation and natural beauty. It is surrounded by abundant greenery, staying true to the 'Garden City' ethos of Mumbai. At The Meridian Towers, you will always be at the heart of everything you desire.



AT THE HEART OF EXQUISITE LIVING



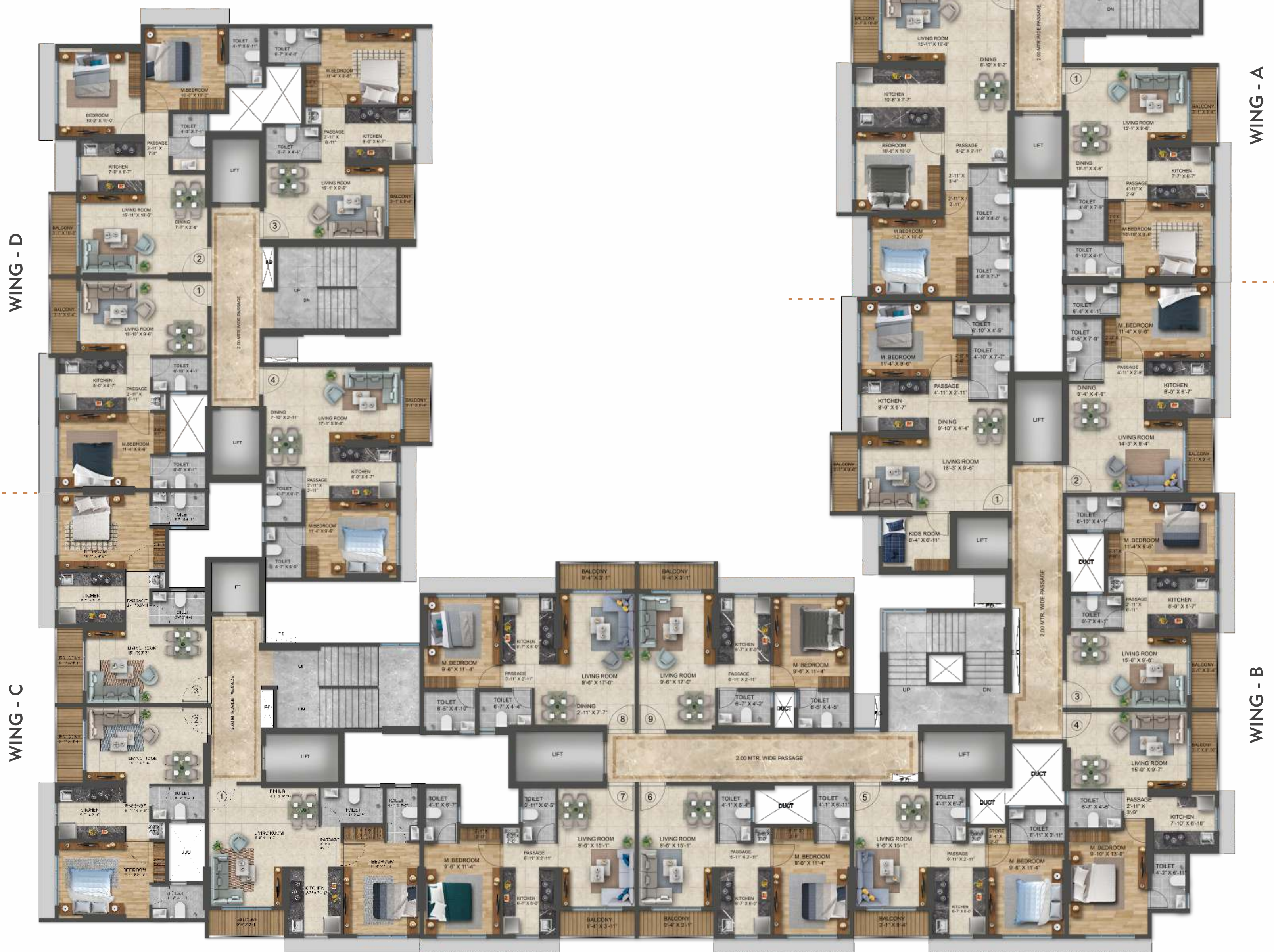


1. Rooftop Fully Equipped Gymnasium
2. Rooftop Club House
3. Stretching Lawn
4. Reflexology Pathway
5. Swing Court
6. Outdoor Gym
7. Open Yoga Deck
8. Green Walkway
9. Cove Seat
10. Toddlers Play Area
11. Senior Citizen's Corner
12. Cabana / Deck Seating

FLOOR PLANS

Every block at The Meridian Towers is carefully planned, keeping in mind the essentials of contemporary living. Coupled with intelligent use of space and advanced architecture, these blocks are strategically designed to facilitate ample sunlight and ventilation, while also offering a scenic view of the lush green premises.

TYPICAL FLOOR PLAN





Flat No. 2



WING A
TYPICAL FLOOR PLAN

WING A

UNIT	LAYOUT	RERA CA
1	1 BHK	494 SQ.FT.
2	2 BHK	752 SQ.FT.
3	2 BHK	600 SQ.FT.
4	1 BHK	459 SQ.FT.





Flat No. 2

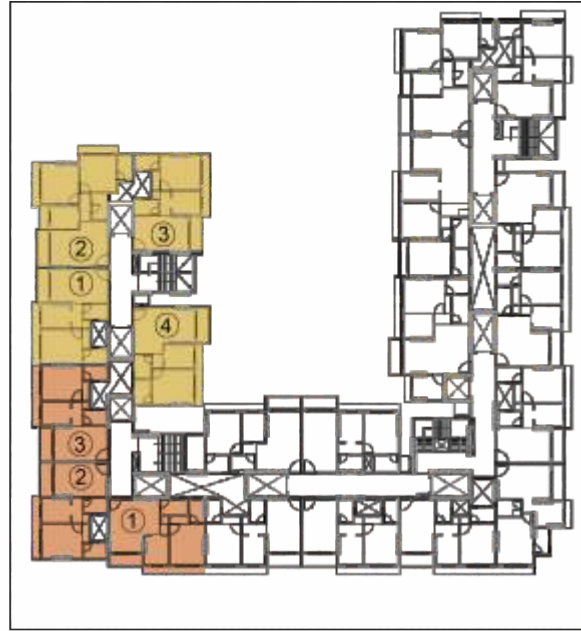
WING B

UNIT	LAYOUT	RERA CA
1	2 BHK	591 SQ.FT.
2	1 BHK	493 SQ.FT.
3	1 BHK	464 SQ.FT.
4	1 BHK	473 SQ.FT.
5	1 BHK	459 SQ.FT.
6	1 BHK	463 SQ.FT.
7	1 BHK	462 SQ.FT.
8	1 BHK	482 SQ.FT.
9	1 BHK	465 SQ.FT.



WING B
TYPICAL FLOOR PLAN





WING C
TYPICAL FLOOR PLAN

WING C

UNIT	LAYOUT	RERA CA
1	1 BHK	502 SQ.FT.
2	1 BHK	457 SQ.FT.
3	1 BHK	464 SQ.FT.



WING D
TYPICAL FLOOR PLAN

WING D

UNIT	LAYOUT	RERA CA
1	1 BHK	473 SQ.FT.
2	2 BHK	603 SQ.FT.
3	1 BHK	460 SQ.FT.
4	1 BHK	483 SQ.FT.

MODERN LIFE, IMPECCABLE STYLE.





SPECIFICATIONS



PLASTERING:

Internal walls - Smooth-finish plastering
 External walls - Texture-finish plastering as per architectural design



PAINT:

Paint of reputed brand for internal walls, Enamel paint for wood and grill works, and weather coat paint for all external walls. Polish for main entrance door



DOORS:

Main door with thick Veneer and a wooden frame
 Bedroom door frames are made of wood and flaunt classy enamel paint.
 Toilet doors with waterproof flush shutters
 Best-quality hardware fittings for all doors
 UPVC windows of reputed make with three tracks for all windows



ELECTRICAL:

All Fittings complying to ISI Standards, concealed conduits, quality copper wire, and adequate number of elegant modular electrical switches of reputed make. One TV point each in living room and all bedrooms. Circuit breakers (MCB) for lighting and heating lines will be provided at the main distribution box within each flat. Two telephone points, one each in the living room and master bedroom, with adjacent power point. Broadband provision will be provided in each apartment.



STRUCTURE:

RCC-framed structure designed to authority standard



WATER SUPPLY:

Adequate water supply through borewells and rain water harvesting. Cauvery water line for kitchen and water filters. All pipelines will be of CPVC (ISI make) connected to pumps and overhead tanks.



TOILETS:

Glazed tiles in bathroom and toilet. Branded sanitary ware and CP fittings.



FLOORING:

Vitrified flooring in living / dining rooms, kitchen, bedroom and foyer. All common areas will have tiles finish.



KITCHEN:

Granite kitchen platform with stainless sink, dado above granite kitchen platform in glazed tiles. Provision for water filter, freezer, exhaust fan and oven point in kitchen utility.



LIFT:

Reputed brand lifts in each wing with sufficient capacity & automatic doors.

THE PROMOTERS

Project by



Site : **THE MERIDIAN TOWERS**

Opp. Bharat Petroleum Petrol Pump, Near Shreyas Cinema Metro Station,
L.B.S. Marg, Ghatkopar West, Mumbai - 400086.

Sales Contact

+91 810 810 9698 • 810 810 9896

E : sales@themeridiantowers.com • W : www.themeridiantowers.com

Regd. Office : A-Wing, G-1, Beach Apartment, Dr. A. B. Nair Road,
Juhu, Vile Parle, Mumbai - 400049.

L. S. / Architect
Mr. Pradeep M. Jain
Kahaan Archpro Consultants
(K A CONS)

Design Architect
Mr. Akhil Garg
Incepta Architecture & Design
Singapore & Mumbai

RCC Consultant
Mr. Rajkumar Bhonde
SSCONS Consulting Structural Engineers

MEP Consultan
Mr. Zia Ansari / Mr. Nikhil Gawas
EM & PH Engg. Consultants

Construction Company

ARIHANT BUILDCON



MahaRERA No. **P51900049686**
<https://maharera.mahaonline.gov.in/>



Note : The information in this brochure is indicative of the kind of development that is proposed. It is prepared and issued in good faith and is for guidance only. It does not constitute part of any offer or contract. It is subject to the approval from the respective authorities. In the interest of the continuing improvement of the project and or any changes as suggested by the authorities or the Developers reserve the right to alter the Layout, Plans, Specifications, Amenities or features of the building/s without any prior notice or obligation to any buyer's in the project. The photographs and the artists impressions in the brochure are for reference only. All the amenities provided subject to approval of competent authority.